

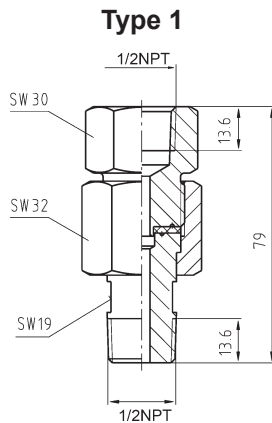
Gauge adaptors

for pressure gauges and transmitters
swivel adaptor

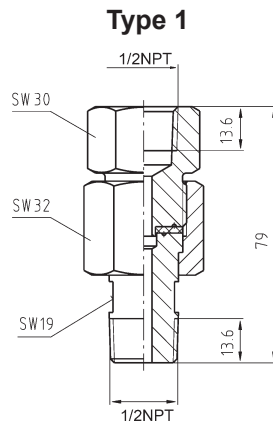
E 09.07.10

Ed.21.01

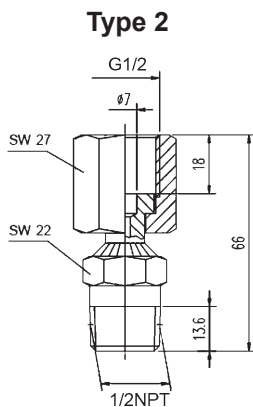
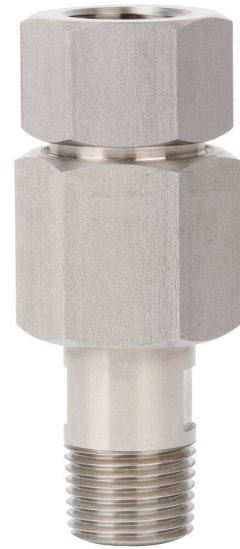
Rotatable gauge adapters (swivel adapters) enable the orientation of pressure measuring instruments through a 360° range.
Stainless steel 316L. Working pressure max 420 bar.
With or without material certificate EN 10204 3.1 and NACE
Option with material Monel 400



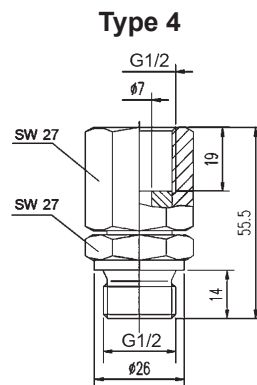
Swivel adaptor type 1
1/2" NPT female for instrument
1/2" NPT male for process
Temperature diagram 1.1
Without material certificate
Best.nr 93200000



Swivel adaptor type 1
1/2" NPT female for instrument
1/2" NPT male for process
Temperature diagram 1.1
Material certificate EN 10204 3.1
NACE MR0103, MR0175, ISO 15156
Best.nr 93260000



Swivel adaptor type 2
G1/2" female for instrument
1/2" NPT male for process
Temperature diagram 1.2
Without material certificate
Best.nr 93210000



Swivel adaptor type 4
G1/2" female for instrument
G1/2" male for process
Temperature diagram 1.2
Material certificate EN 10204 3.1
NACE MR0103, MR0175, ISO 15156
Best.nr 93230000

